

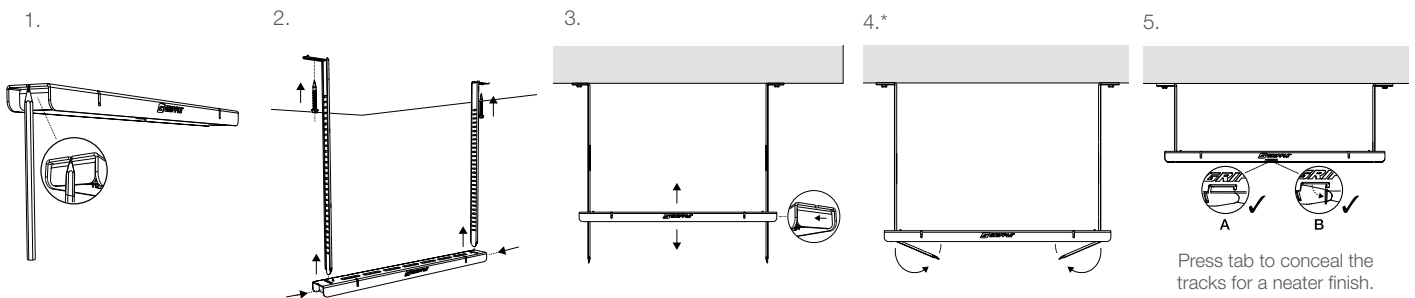
A space efficient low profile pre-fabricated trapeze bracket. Ideal for use with electrical containment, pipework and mechanical services in ultra-restricted ceiling spaces.

## FEATURES / BENEFITS

- **Space saver** – 21 mm bracket depth is even lower profile than standard Fast Trak range
- **Quick** – up to six times faster to install than traditional suspension systems
- **Safe** – pre-fabricated system which removes the need to cut threaded rod or channel on site
- **Tool free adjustment** – bracket can be moved up and down the tracks to accommodate changes in position during installation
- **Easy measurement** – indicators at each end of the bracket offer measurement guide when marking fixing points on the ceiling; M4 level markers on the tracks highlight 50 mm increments, no leveling tools required
- **Neat & tidy** – system can be 'stacked' on-site to reduce storage requirements
- **Zero waste** – tracks bend neatly under bracket\*
- **Fire tested** – to F120 to the temperatures associated with BS EN 1363-1:2012. Independent test data with load limits and exposure times is available upon request from Gripple Technical Services.



## INSTALLATION & ADJUSTMENT

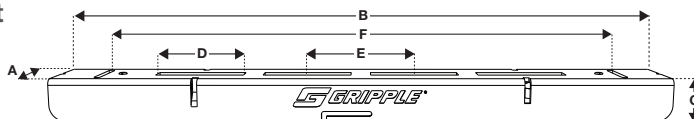


Internal applications only. Do not adjust under load. No dynamic loading. Single use only.

\*Excess tracks can also be snapped off once bracket is levelled & secured for a neater finish. Bending tracks by hand is not recommended when excess is under 100 mm.

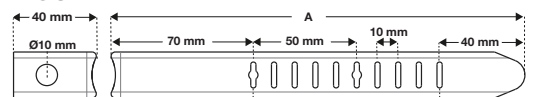
## SPECIFICATION

### Bracket



Bracket	A (mm)	B (mm)	C (mm)	D (mm)	E (mm)	F (mm)
FTBL-190	40	235	21	40	50	190
FTBL-290	40	335	21	40	50	290
FTBL-390	40	435	21	40	50	390
FTBL-490	40	535	21	40	50	490
FTBL-590	40	635	21	40	50	590
FTBL-690	40	735	21	40	50	690
FTBL-790	40	835	21	40	50	790
FTBL-890	40	935	21	40	50	890
FTBL-990	40	1035	21	40	50	990
FTBL-1090	40	1135	21	40	50	1090
FTBL-1190	40	1235	21	40	50	1190
FTBL-1290	40	1335	21	40	50	1290
FTBL-1390	40	1435	21	40	50	1390
FTBL-1490	40	1535	21	40	50	1490

### Track



Track	A (mm)	B (mm)
FTT-200	200	90
FTT-300	300	190
FTT-400	400	290
FTT-500	500	390
FTT-600	600	490
FTT-700	700	590
FTT-800	800	690
FTT-900	900	790
FTT-1000	1000	890
FTT-1100	1100	990
FTT-1200	1200	1090
FTT-1300	1300	1190
FTT-1400	1400	1290
FTT-1500	1500	1390

## SUBMITTAL INFORMATION

### Safe Working Load:

Load rating performance at ambient temperatures - for fire performance, please contact your sales representative or email [TechnicalServices@gripple.com](mailto:TechnicalServices@gripple.com). See table on reverse page for maximum working loads at ambient temperatures.

### Material:

**Track & Bracket** – BS EN 10346:2009 DX51D

(Mild Steel, Pre-Galv Z275)

**Spring** – Stainless Steel 302

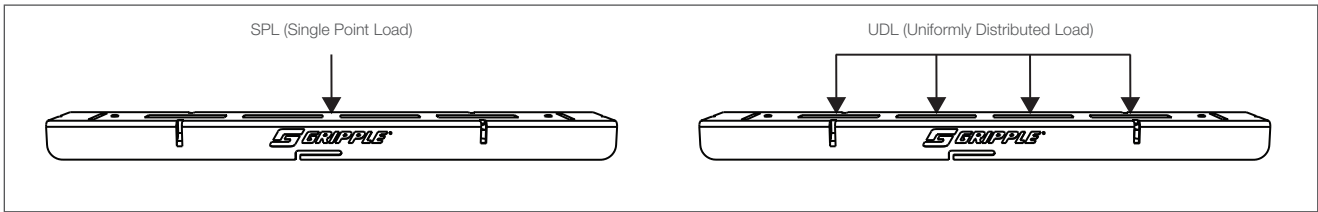
**Latch** – BS EN 10346:2009 DX51D  
(Mild Steel)

### Approvals:

Lloyds certified

Fire tested by Exova to F120





## Maximum Working Load @ 3:1 (kg)

Bracket	FTBL 190	FTBL 290	FTBL 390	FTBL 490	FTBL 590	FTBL 690	FTBL 790	FTBL 890	FTBL 990	FTBL 1090	FTBL 1190	FTBL 1290	FTBL 1390	FTBL 1490
UDL (Uniformly Distributed Load)	195	135	110	95	85	75	60	60	50	45	40	35	35	30
SPL (Single Point Load)	150	95	65	60	50	45	35	35	30	30	20	20	15	15

## Maximum Working Load @ 3:1 (kN)

Bracket	FTBL 190	FTBL 290	FTBL 390	FTBL 490	FTBL 590	FTBL 690	FTBL 790	FTBL 890	FTBL 990	FTBL 1090	FTBL 1190	FTBL 1290	FTBL 1390	FTBL 1490
UDL (Uniformly Distributed Load)	1.91	1.32	1.07	0.931	0.833	0.735	0.588	0.588	0.49	0.441	0.392	0.343	0.343	0.294
SPL (Single Point Load)	1.47	0.931	0.637	0.588	0.49	0.441	0.343	0.343	0.294	0.294	0.196	0.196	0.147	0.147